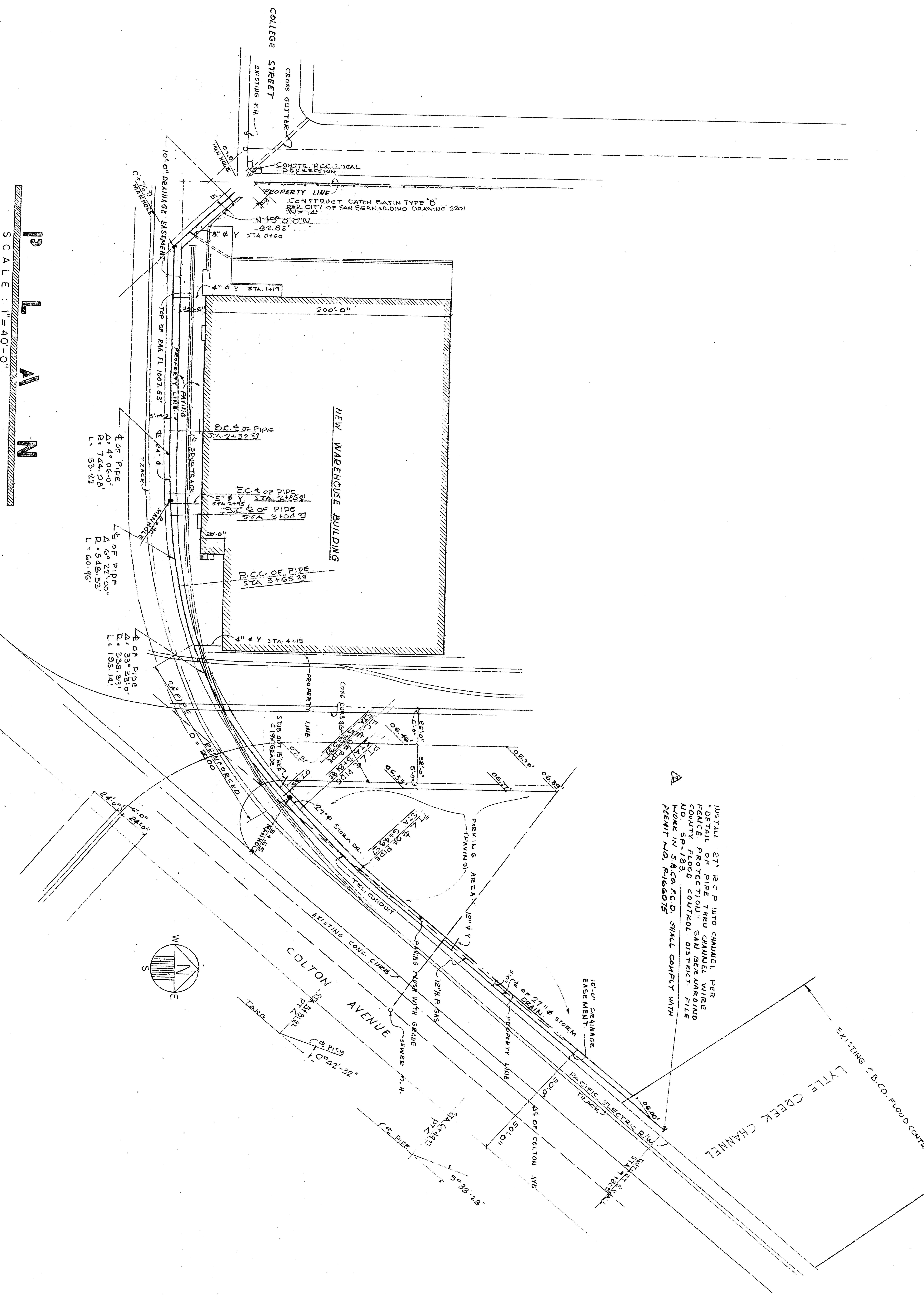


SCALES
 HORIZ: 1"=40'-0"
 VERT: 1"=4'-0"



SCALE: 1"=40'-0"

GENERAL NOTES

- 1 - ALL WORK EMBODIED ON THIS PLAN SHALL BE DONE IN CONFORMANCE WITH APPLICABLE PROVISIONS OF STANDARD SPECIFICATIONS TO SD-71 REVISED NOV. 1964 AND STANDARD SPECIFICATIONS TO SD-71 REVISED NOV. 1964 AND STANDARD SPECIFICATIONS TO SD-71 REVISED NOV. 1964 AND STANDARD SPECIFICATIONS TO SD-71 REVISED NOV. 1964.
- 2 - CONTRACTOR SHALL VERIFY THE LOCATIONS OF ALL EXISTING UTILITIES AND MARK THEM ACCORDING TO THE STANDARD SPECIFICATIONS TO SD-71 REVISED NOV. 1964.
- 3 - CONTRACTOR SHALL VERIFY THE LOCATIONS OF ALL EXISTING UTILITIES AND MARK THEM ACCORDING TO THE STANDARD SPECIFICATIONS TO SD-71 REVISED NOV. 1964.
- 4 - BEYOND MARK LINED SQUARE AT S.E. CORNER OF BRIDGE AT COLTON AVE AND LYTLE CREEK BRIDGE.
- 5 - WORK AT RR CROSSING SHALL COMPLY WITH R.R. REGULATIONS.

APPROVED: [Signature]
 REGISTERED CIVIL ENGINEER NO. 12153

CITY OF SAN BERNARDINO
 DEPARTMENT OF ENGINEERING
 STORM DRAIN